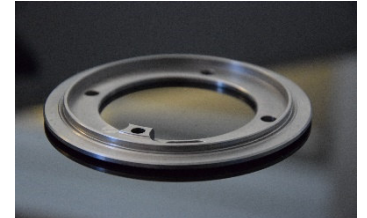
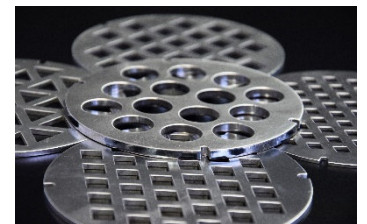
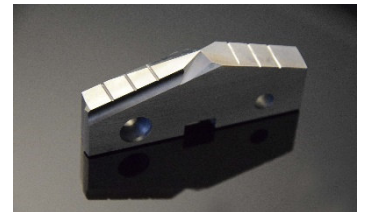


BSEcoX

Gerber
Maschinenbau

The Through Feed Brush Polishing Machine for Demanding
Deburring and Polishing Applications



Deburring, edge-honing
and surface polishing

—
process-safe, flexible, economical



The Through Feed Brush Polishing Machine for Demanding Deburring and Polishing Applications

The **BS EcoX** is a powerful through-feed brush polishing machine with two planetary brush heads, specifically designed for two-stage polishing applications and deburring applications with coarser burrs. The optimized, efficient, and targeted use of our in-house brush technology allows for cost-effective, one-sided processing of parts with a nominal size of up to Ø 250 mm.

The **BS EcoX** is a perfect solution for demanding deburring and surface polishing applications thanks to its state-of-the-art technology. The machine optimally combines two processes in one unit and is a highly effective and productive solution for your manufacturing processes.

MAXIMUM PRODUCTIVITY AND FLEXIBILITY

- The **BS EcoX** offers high productivity and easy handling.
- The already PLC-controlled base version features an automatic brush measurement system to compensate for brush wear.
- Thanks to the modular design with various options and the ability to automate via data management using OPC UA (Industry 4.0), the **BS EcoX** is an extremely flexible solution for your manufacturing.
- The **BS EcoX** versatility allows seamless integration into existing processes.

TWO PROCESSES IN ONE PASS

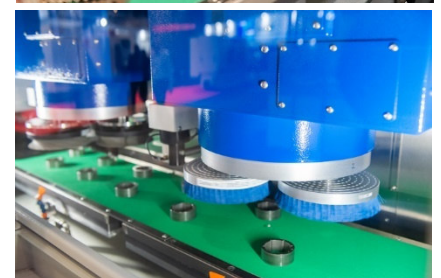
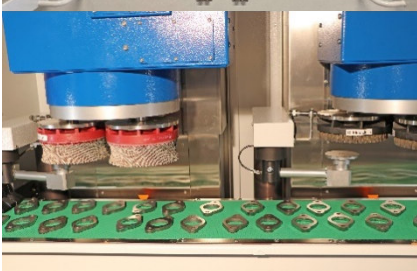
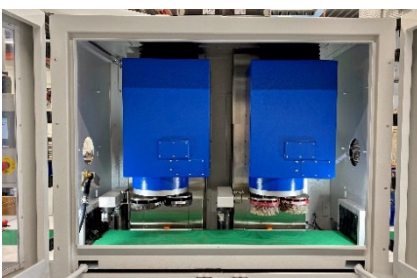
- Two processes can be performed simultaneously with the **BS EcoX** use of two planetary brush heads in one pass, significantly reducing processing time while expanding the range of applications.
- The machine is versatile and offers maximum flexibility in deburring and surface polishing.

APPLICATIONS

- The **BS EcoX** is perfect for processing precision parts such as stamping and fine blanking, milling, turning, sintered or lasered, and water jet-cut parts.

MACHINE FEATURES

- The **BS EcoX** is a space-saving solution with maximum throughput in deburring and polishing precision parts.
- Magnetic or chain belt conveyors have optimum holding with workpiece carriers, cages, or nests.
- The conveyor system can be easily adapted to the parts, and the programmable Z-axes of the brush heads allow for processing a variety of different part heights.



Technical Data

Machine

Total weight	kg	1400
Dimension Width/Depth/Height	mm	3000 x 1100 x 2600
Stroke Z-axis	mm	2 x 200
Electrical connection	VAC; Hz	3 x 400/N/PE; 50
Air connection (optional)	bar	6

Brushes

Brush diameter	mm	3 x 150 per head
Brush speed	1/min	300 - 1,500
Brush drive power	kW	2 x 2.2
Brush types	/	SiC, ceramic or diamond-studded synthetic bristles - straight or diagonally coated
Speed of planetary brush head	1/min	9 - 47
Control of the brush head infeed (incl. compensation for the wear of the brush)	/	Manually or alternatively automatic
Rotational circle of the brushes (Ø)	mm	2 x 320

Machining options

Conveyor feeding device	/	With transport belts and pull-down magnet or link conveyor with workpiece carriers, cages or nests
Conveying speed	mm/sec	32 – 0.3 (10 – 999)
Handling of the parts	/	Manual workstation, stacking magazine, vibrating conveyor, conveyor belt with feed separation, robots, etc.
Demagnetisation device for residual magnetism	A/cm	< 2
Coolant device	/	Emulsion/Oil
Extraction	/	Emulsion/Oil/Dust
Automation (Industry 4.0)	/	Profibus/Ethernet/OPC-UA
Scope for extending	/	Rinsing device, blower unit, automatic infeed, automatic brush measurement, part measurement

Workpieces and their dimensions

Typical parts	/	Stamping and fine blanking parts, flat turned and milled parts, sintered parts, laser, and water jet cut parts, indexable inserts
Size of parts (Ø), one-sided machining, nominal to	mm	250 and/or 250 wide x approx. 1,500 parts length
Part thickness	mm	0.1 - 80





René Gerber AG

Werkstrasse 35

3250 Lyss

Switzerland

p +41 32 387 88 00

e info@gerber-maschinen.ch

www.gerber-maschinen.ch

